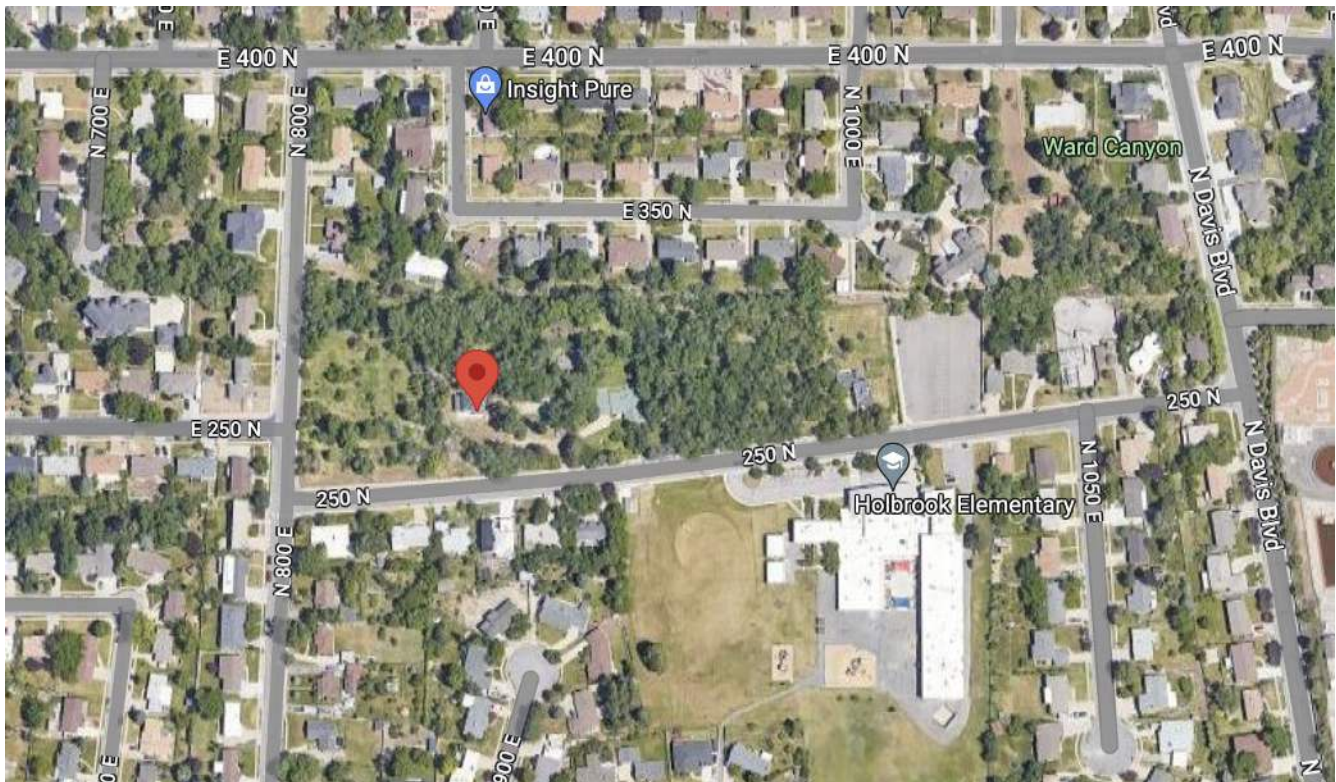


May 4 1935 Meeting Minutes

Meeting Date: Saturday, Apr 5, 1935

Location: Unknown, likely the homeplace in Bountiful

- Ethel's (#1,1's) Home | 893 E 250 N, Bountiful, UT 84010



Meeting Notes (from Clyde Gustafson)

No.1 (Elden Kingston) gave us the latest instructions concerning honey. Do not us it. It was a quick building food. Wheat was a slower but more enduring food. We couldn't get results and enduring at the same time. We must choose that which gives the lasting results.

No.2 (Clyde Gustafson) dreamed that he had a ice cream freezer about a week ago. No.1's family had ice cream and had left about one fifth of it in the freezer which had stayed frozen. I did not want to waste it so I

Bull Historical Society
DCCS Governing Board Meeting Minutes
1935 May 4 Meeting

2 of 2

was going to mix the new milk with it and use it in the ice cream so I tasted it. I began to mix it and tasting it. It kept swelling and tasting worse, soon the freezer was full of filth.

Interpretation: this stale ice cream represented honey which we have been using and shows that we cannot use it and build our bodies as we should because it is a quick strengthening food and not of an enduring value. So honey will not be used any more.